

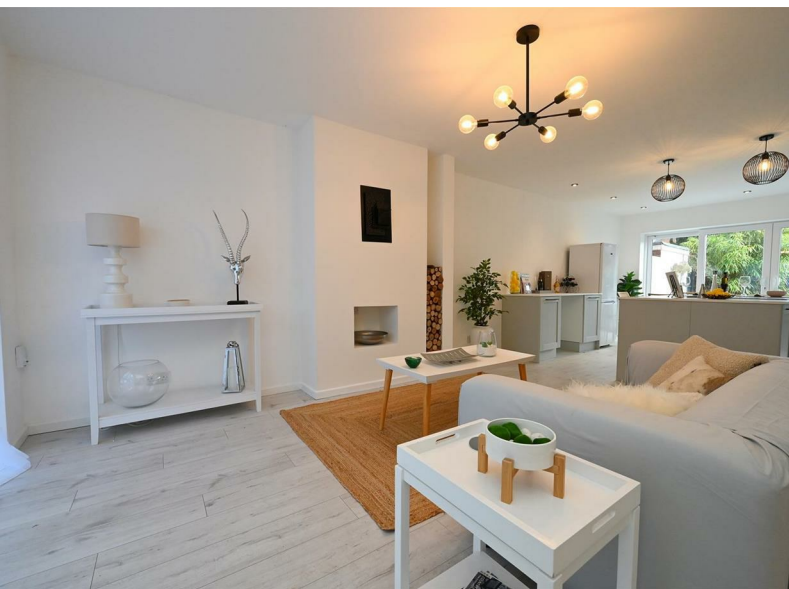
ENGLANDS



20 Oak Close

Harborne, Birmingham, B17 9AW

£375,000





PROPERTY DESCRIPTION

A beautifully refurbished and presented modern townhouse in an excellent cul-de-sac location. Double glazing and replacement central heating as specified, enclosed porch, splendid through open plan living/dining/fitted kitchen area, ground floor WC, three bedrooms, bathroom/WC, low maintenance rear garden with decking and garage in nearby block. The close has some communal parking facilities. It is set back behind a mainly slate chip fore garden with inset paving steps.

Oak Close is a delightful and convenient cul-de-sac location just off the junction of Grosvenor Road/Elmtree Road, in turn leading of Court Oak Road and Lordswood Road respectively. It is readily accessible to the Queen Elizabeth Medical Centre, the University of Birmingham and Harborne Leisure Centre, as well as excellent amenities around Harborne High Street, the delightful grounds of Queens Park, and regular transport services through to comprehensive City Centre leisure entertainment and shopping facilities.

Deceptive from the outside, an internal inspection is absolutely essential and thoroughly recommended to fully appreciate the splendid accommodation which has undergone recent and extensive improvement/refurbishment work.





ENTRANCE PORCH

Having double glazed outer door and side windows, wall light point and obscure glazed inner door opening to:

OPEN PLAN LIVING/DINER/KITCHEN

8.53m max x 4.75m max including stairs area (27'11" max x 15'7" max including stairs area) Having feature chimney breast, radiator, wood laminate effect flooring, built in storage cupboard, double glazed front window, recessed ceiling spotlights, double glazed rear windows and sliding patio doors opening on to the rear decking and garden.

The kitchen area includes an inset single drainer sink top with tiled splashback, mixer tap and cupboard below. There are further base units and appliance spaces with worktops over also plumbing facilities for dishwasher and washing machine. Large island incorporating breakfast bar, integrated electric oven with four ring hob over, also pop-up extractor fan and separate pop up power/USB point. Leading off the open plan area is:

GROUND FLOOR WC

Having low flush WC, wash hand basin with mixer tap, and built-in cupboard housing the "Vaillant" gas fired boiler.

LANDING

Having built in storage cupboard, ceiling light point and loft hatch with some boarding and light point.

BEDROOM ONE FRONT

4.30m x 2.72m (14'1" x 8'11")

Having two double built in wardrobes, radiator, double glazed window and three ceiling light points.

BEDROOM TWO REAR

3.48m max x 2.76m max (11'5" max x 9'0" max)

Having radiator, ceiling light point and double glazed window.

BEDROOM THREE FRONT

3.23m max including doorway area x 1.94m max (10'7" max including doorway area x 6'4" max)

Having radiator, double glazed window and built in wardrobe/cupboard.

REFITTED BATHROOM

1.88m max x 1.78m max (6'2" max x 5'10" max) Having freestanding bath tub with mixer tap, hand held shower and drench style shower-head above, low flush WC, also vanity unit incorporating wash handbasin with mixer tap, drawers and storage rack beneath. Partially obscure double glazed rear window, tiled floor, recessed ceiling spotlights, sliding door and wall mounted towel/radiator.

OUTSIDE

Attractive rear low maintenance garden designed for ease of maintenance and including large deck terrace, slate chip area and panel fencing to the boundaries. There is rear access to the property. Garage situated in a nearby block at the end of the close.

ADDITIONAL INFORMATION

Council tax band: C

Tenure: Freehold



ENGLANDS

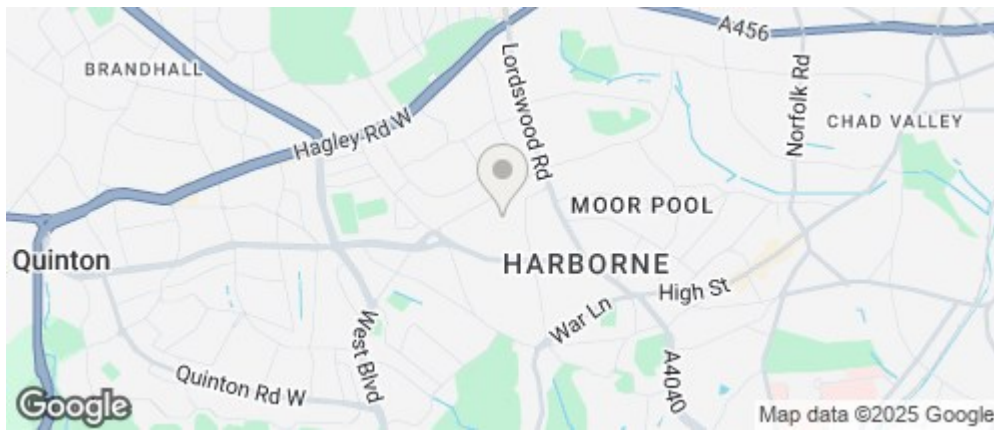




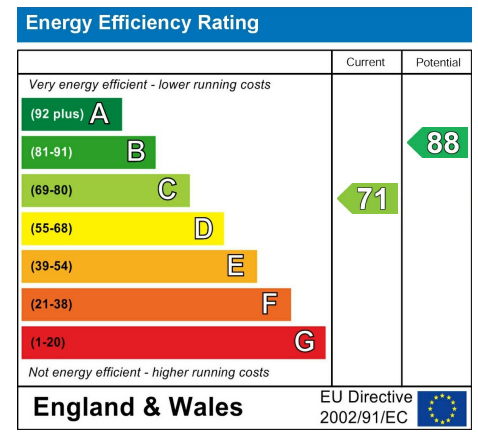
ENGLANDS



ROAD MAP



ENERGY EFFICIENCY GRAPH



FLOOR PLAN



DISCLAIMER NOTICES

"The agent has not tested any apparatus, equipment, fixture, fittings or services, and so does not verify they are in working order, fit for their purpose, or within ownership of the sellers, therefore the buyer must assume the information given is incorrect. Neither has the agent checked the legal documentation to verify legal status of the property or the validity of any guarantee. A buyer must assume the information is incorrect, until it has been verified by their own solicitors. The measurements supplied are for general guidance, and as such, must be considered as incorrect. A buyer is advised to re-check the measurements themselves before committing themselves to any expense.

Nothing concerning the type of construction, or condition of the structure is to be implied from the photograph of the property. The sales particulars may change in the course of time, and any interested party is advised to make final inspection of the property prior to exchange of contracts."

Misrepresentation Act 1967

"These details are prepared as a general guide only and should not be relied upon as a basis to enter into a legal contract, or to commit expenditure. An interested party should consult their own surveyor, solicitor or other professional before committing themselves to any expenditure or other legal commitments. If any interested party wishes to rely upon any information from the agent, then a request should be made, and specific written confirmation can be provided. The agents will not be responsible for any verbal statement made by any member of staff, as only a specific written confirmation should be relied upon. The agent will not be responsible for any loss other than when specific written confirmation has been requested."

These particulars, whilst believed to be accurate are set out as a general outline only for guidance and do not constitute any part of an offer or contract. Intending purchasers should not rely on them as statements of representation of fact, but must satisfy themselves by inspection or otherwise as to their accuracy. No person in this firm's employment has the authority to make or give any representation or warranty in respect of the property.